

**North Yorkshire County Council**

**Yorkshire Coast and Moors County Area Committee**

**5 July 2017**

**Scarborough and Whitby District Police and Community Safety Report**

Report of Assistant Chief Executive (Legal and Democratic Services)

**1.0 Purpose of the Report**

To note current performance, future community safety and crime reduction partnership operations in the Scarborough district.

**2.0 Background**

2.1 At the Area Committee's request, Superintendent Alisdair Dey (Area Commander for Scarborough/Ryedale) normally attends every meeting to report on the most recent published Community Safety Partnership crime and incident data for the Scarborough Borough and to discuss current performance with Members of the Committee.

**3.0 Recommendation**

3.1 That Members note the latest crime and incident data for the Scarborough district.

Barry Khan  
Assistant Chief Executive (Legal and Democratic Services)  
County Hall  
Northallerton

JO'D 27 June 2017

Background Documents: None



# 2016-17 Crime and Incidents for

# Scarborough

*Data is produced for the operational use of the Community Impact Team and will not necessarily match recorded crime figures produced by North Yorkshire Police.*

**Community Safety Partnership**

**June 2017**

# Recorded Crime Summary

The table below provides data on recorded crimes for the period 2016/17 to date. The data in the tables show statistics to date and comparative data for the same time period in previous years.

## Summary (Year to Date)

Overall, the level of recorded crime has increased by 1.1% (81 offences).

Crime Categories	2013/14	2014/15	2015/16	2016/17	+ / - Change	Crime %
Violence Against The Person	1326	1582	2139	2322	8.6%	30.1%
Sexual Offences	132	119	172	219	27.3%	2.8%
Robbery	24	37	35	46	31.4%	0.6%
Burglary	646	805	659	571	-13.4%	7.4%
Burglary in a Dwelling	227	260	239	225	-5.9%	2.9%
Burglary Other	417	542	412	339	-17.7%	4.4%
Vehicle Offences	331	368	370	281	-24.1%	3.6%
Arson & Criminal Damage	1210	1075	1339	1222	-8.7%	15.8%
Theft Offences	1933	1923	1933	1910	-1.2%	24.8%
Theft: Bicycle Theft	137	156	106	114	7.5%	1.5%
Theft: Shoplifting	725	782	879	883	0.5%	11.5%
Theft: Theft From Person	84	83	99	83	-16.2%	1.1%
Theft: All Other Theft	987	902	849	830	-2.2%	10.8%
Drug Offences	398	442	395	445	12.7%	5.8%
Possession Of Weapons	41	45	51	62	21.6%	0.8%
Public Order Offences	391	328	349	405	16.0%	5.3%
Misc Crimes Against Society	60	68	104	153	47.1%	2.0%
Fraud	85	46	84	75	-10.7%	1.0%
<b>All Crime</b>	<b>6577</b>	<b>6838</b>	<b>7630</b>	<b>7711</b>	<b>1.1%</b>	

## Summary (Month)

Overall, the level of recorded crime has increased this month by 14.2% (90 offences).

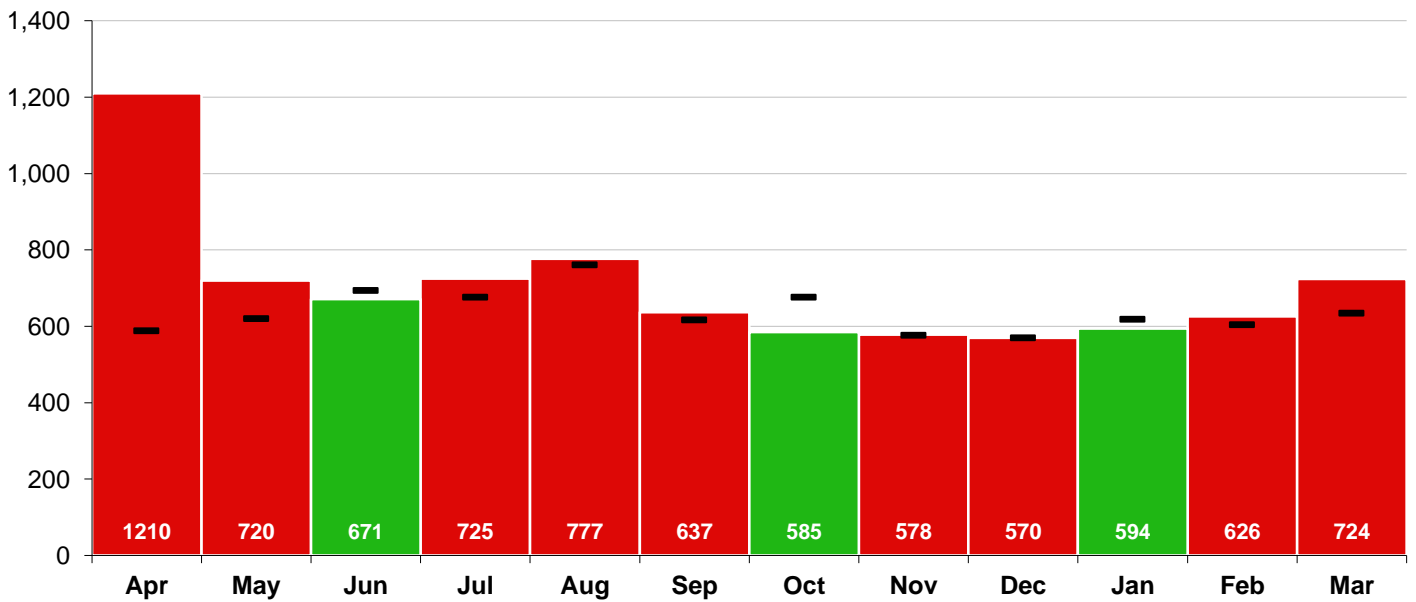
Crime Categories	Mar 2014	Mar 2015	Mar 2016	Mar 2017	+ / - Change	Crime %
Violence Against The Person	101	137	188	230	22.3%	31.8%
Sexual Offences	16	11	15	25	66.7%	3.5%
Robbery	2	6	2	8	300.0%	1.1%
Burglary	78	72	59	55	-6.8%	7.6%
Burglary in a Dwelling	44	28	26	28	7.7%	3.9%
Burglary Other	34	44	32	27	-15.6%	3.7%
Vehicle Offences	34	29	22	21	-4.5%	2.9%
Arson & Criminal Damage	91	81	101	127	25.7%	17.5%
Theft Offences	175	154	159	152	-4.4%	21.0%
Theft: Bicycle Theft	14	9	4	7	75.0%	1.0%
Theft: Shoplifting	69	66	82	73	-11.0%	10.1%
Theft: Theft From Person	4	5	4	5	25.0%	0.7%
Theft: All Other Theft	88	74	69	67	-2.9%	9.3%
Drug Offences	27	44	37	38	2.7%	5.2%
Possession Of Weapons	3	2	3	9	200.0%	1.2%
Public Order Offences	20	20	34	38	11.8%	5.2%
Misc Crimes Against Society	5	6	6	13	116.7%	1.8%
Fraud	5	6	8	8	0.0%	1.1%
<b>All Crime</b>	<b>557</b>	<b>568</b>	<b>634</b>	<b>724</b>	<b>14.2%</b>	

# All Recorded Crime

Overall, the level of recorded crime has increased by 1.1% (81 offences).

During the latest month, the level of all recorded crime has increased by 14.2% (90 offences).

	Apr	May	Jun	Jul	Aug	Sep	Oct	Nov	Dec	Jan	Feb	Mar	
2013/14	503	522	540	618	666	560	591	579	579	445	417	557	<b>6577</b>
2014/15	498	627	542	587	658	566	577	585	597	506	527	568	<b>6838</b>
2015/16	588	620	693	676	760	616	676	576	569	618	604	634	<b>7630</b>
2016/17	<b>1210</b>	<b>720</b>	<b>671</b>	<b>725</b>	<b>777</b>	<b>637</b>	<b>585</b>	<b>578</b>	<b>570</b>	<b>594</b>	<b>626</b>	<b>724</b>	<b>8417</b>
	<b>106%</b>	<b>16%</b>	<b>-3%</b>	<b>7%</b>	<b>2%</b>	<b>3%</b>	<b>-13%</b>	<b>0%</b>	<b>0%</b>	<b>-4%</b>	<b>4%</b>	<b>14%</b>	<b>1.1%</b>



# All Recorded Crime Offences by Ward

The table below provides data on all recorded crime offences for the period 2015/16 to date. The data in the tables show statistics to date by area and comparative data for the same time period in previous years.

	2013/14	2014/15	2015/16	2016/17	By Month											
					Apr	May	Jun	Jul	Aug	Sep	Oct	Nov	Dec	Jan	Feb	Mar
Castle	1769	1737	1939	2070	335	179	194	202	214	176	165	166	142	161	149	152
Central	493	537	635	623	103	55	57	63	47	65	27	54	52	54	51	52
North Bay	473	404	495	498	63	41	45	49	43	49	41	32	37	46	43	44
Whitby West Cliff	375	365	420	417	77	30	42	41	38	34	25	19	38	31	45	47
Woodlands	274	375	417	387	48	42	29	33	26	26	38	35	30	34	34	35
Ramshill	358	406	398	386	59	35	17	28	45	29	31	24	29	27	41	45
Eastfield	352	341	497	373	60	38	31	45	33	42	32	16	27	21	27	45
Stepney	272	285	273	310	45	36	20	31	22	32	29	22	20	24	34	24
Streonshalh	268	250	245	295	50	40	30	19	33	14	25	29	22	18	18	25
Falsgrave Park	219	246	258	287	38	17	22	23	28	27	35	33	21	16	23	28
Filey	229	271	271	276	38	23	27	39	37	25	10	17	22	21	14	32
Newby	158	185	231	237	32	22	10	12	24	13	27	20	30	18	22	29
Hertford	191	222	185	220	38	16	26	23	34	15	15	14	13	13	16	21
Northstead	196	223	239	220	44	22	32	15	19	15	11	17	18	15	16	28
Cayton	136	157	158	179	37	20	13	13	26	16	14	17	9	14	10	12
Seamer	116	120	134	161	19	14	19	19	7	8	10	11	17	14	20	16
Mayfield	100	99	133	129	16	15	9	12	13	4	5	10	11	17	13	16
Mulgrave	113	119	105	117	25	19	11	16	8	5	6	6	6	6	5	10
Scalby, Hackness and Staintondale	82	66	116	115	12	8	10	8	37	4	7	7	5	8	4	14
Weaponness	78	114	117	102	22	9	4	9	10	7	4	6	7	15	10	15
Derwent Valley	68	86	94	77	14	8	10	10	9	6	7	6		4	6	5
Esk Valley	89	89	94	73	7	11	7	6	7	6	7	7	3	4	9	4
Fylingdales	65	50	54	61	9	4		5	8	8	5	4	5	6	9	6
Lindhead	41	44	53	56	6	10	4	3	5	2	5	3	3	3	3	16
Danby	62	45	63	38	10	5	1	1	4	8	4	3	3	4	4	2

# All Recorded Crime Offences by Street

The table below provides data on offences for the period 2015/16 to date. The data in the tables show statistics to date by area and comparative data for the same time period in previous years.

	2013/14	2014/15	2015/16	2016/17	By Month											
					Apr	May	Jun	Jul	Aug	Sep	Oct	Nov	Dec	Jan	Feb	Mar
					WESTBOROUGH	198	257	310	314	20	30	35	27	37	30	20
FALSGRAVE ROAD	168	216	196	211	19	20	20	29	20	19	15	12	15	15	13	14
NEWBOROUGH	80	79	94	143	15	11	11	14	13	7	22	9	7	10	14	10
NORTH MARINE ROAD	111	79	130	139	11	4	9	17	13	19	9	8	9	10	14	16
CASTLE ROAD	82	82	134	137	10	12	10	10	7	16	9	13	9	17	4	20
NORTHWAY	116	97	144	130	8	14	14	11	15	17	4	8	11	9	6	13
QUEEN STREET	82	80	75	126	10	7	6	10	19	12	8	12	7	15	10	10
RAMSHILL ROAD	69	78	83	106	9	9	6	6	8	7	12	6	5	6	16	16
SEAMER ROAD	66	83	80	104	6	8	7	9	15	7	11	9	10	4	9	9
HIGH STREET	87	79	101	103	5	10	7	13	12	8	15	7	4	3	3	16
VICTORIA ROAD	62	55	68	78	6	6	11	3	4	9	4	6	6	2	13	8
DEAN ROAD	71	76	79	72	6	5	8	7	1	3	7	4	6	8	8	9
WOODLANDS DRIVE	58	77	52	72	3	13	7	7	5	3	3	5	3	11	5	7
FORESHORE ROAD	71	61	56	68	9	3	4	12	12	5	6	1	2	7	4	3
WOOLER STREET	16	18	37	57	4		3	4	2	5	5	7	4	6	9	8
BAXTERGATE	53	39	43	51	1	2	7	5	5	4		3	11	4	2	7
COLESCLIFFE ROAD	40	46	48	48	2	4	2	4	7	3	8		6	1	6	5
BRIERCLIFFE	12	18	23	47	1	1	2	2	3	6	7	5	1	12	6	1
SCALBY ROAD	52	49	62	46	2	7	5	1	1	4	3	7	6	2	3	5
TRAFALGAR SQUARE	59	49	30	45	2	2	4	4	7	4	7	2	2	6	2	3
WATERHOUSE LANE	9	19	28	42	4	2	5	1	4	5	5	2	4	2	6	2
WESTWOOD	107	114	88	42	2	6	5	8	2	3	2	5		3	3	3
COLUMBUS RAVINE	28	22	30	40	3	5	4	3	3	5	1	1	3	3	4	5
ST. NICHOLAS STREET	42	31	47	40	6	3	2	5	9	2	2	4	4		1	2
VALLEY BRIDGE ROAD	29	30	23	40	2	3	2	3	5	6	2	2	5	5	2	3
CAYTON LOW ROAD	14	4	14	39	1	4	3	3	2	7	1	2	5	6	4	1
SANDSIDE	21	25	27	38	3	5	5	3	6	3		4	1	2	2	4
VALLEY BRIDGE PARADE	6	27	18	38	13	2	1	1		4	3	7	2	1		4
ABERDEEN WALK	32	37	37	37	2	6	1	1	2	3	2	4	6	3	5	2
EASTBOROUGH	29	23	30	37	4	5	2	2	3	5	2	6	2	1	4	1

# Anti-Social Behaviour Summary

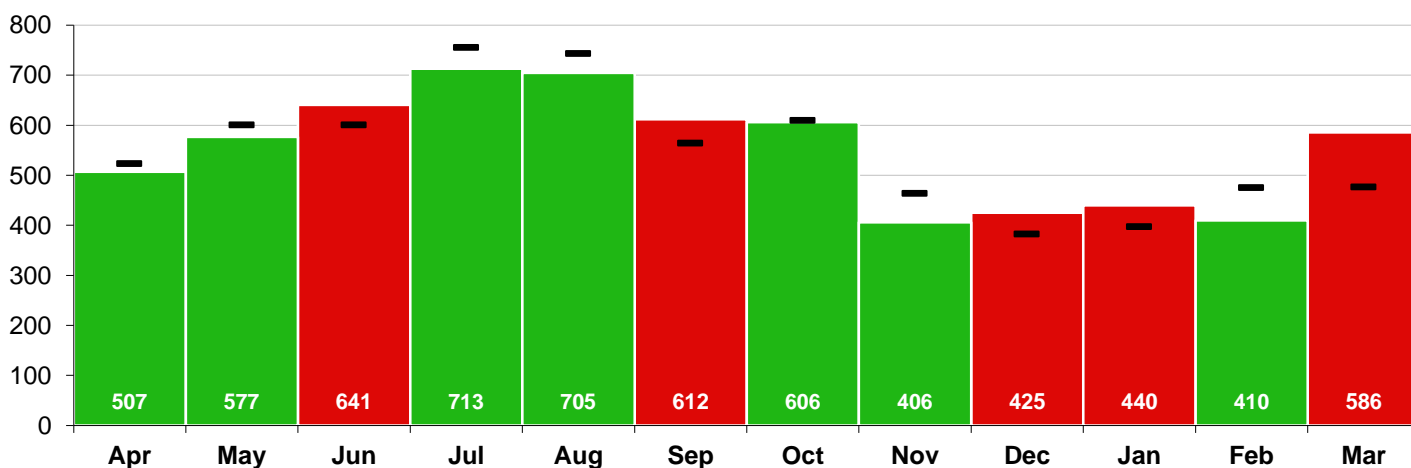
The table below provides data on anti-social behaviour for the period 2016/17 to date. The data in the tables show statistics to date and comparative data for the same time period in previous years.

## Summary

Overall, the level of anti-social behaviour incidents has increased by 0.6% (41 incidents).

During the latest month, the level of anti-social behaviour incidents has increased this month by 23.1% (110 incidents).

	Apr	May	Jun	Jul	Aug	Sep	Oct	Nov	Dec	Jan	Feb	Mar	
<b>2013/14</b>	600	705	703	890	961	669	697	662	578	509	502	624	<b>8100</b>
<b>2014/15</b>	614	644	710	727	744	651	593	504	405	403	389	517	<b>6901</b>
<b>2015/16</b>	523	600	600	755	743	564	609	463	382	397	475	476	<b>6587</b>
<b>2016/17</b>	<b>507</b>	<b>577</b>	<b>641</b>	<b>713</b>	<b>705</b>	<b>612</b>	<b>606</b>	<b>406</b>	<b>425</b>	<b>440</b>	<b>410</b>	<b>586</b>	<b>6628</b>
	<b>-3%</b>	<b>-4%</b>	<b>7%</b>	<b>-6%</b>	<b>-5%</b>	<b>9%</b>	<b>0%</b>	<b>-12%</b>	<b>11%</b>	<b>11%</b>	<b>-14%</b>	<b>23%</b>	<b>1%</b>



## NICL Closure Classification

The table below shows the percentage of ASB Incidents classified as part of the NICL closure code. Each incident can have more than 1 classification.

NICL Closure Code	2013/14	2014/15	2015/16	2016/17	+/- Change
<b>Alcohol</b>	1869	1503	1300	<b>1294</b>	<b>0%</b>
<b>Youth</b>	1621	1044	1165	<b>954</b>	<b>-18%</b>
<b>Drugs</b>	0	0	0	0	
<b>Weapons</b>	8	7	7	<b>8</b>	<b>14%</b>
<b>Mental Health</b>	116	161	264	<b>265</b>	<b>0%</b>
<b>Domestic</b>	2	6	3	<b>10</b>	<b>233%</b>
<b>Prejudice</b>	27	24	23	<b>24</b>	<b>4%</b>

## % of Incidents with NICL Code

	2013/14	2014/15	2015/16	2016/17
<b>Alcohol</b>	23.1%	21.8%	19.7%	<b>19.5%</b>
<b>Youth</b>	20.0%	15.1%	17.7%	<b>14.4%</b>
<b>Drugs</b>	0.0%	0.0%	0.0%	<b>0.0%</b>
<b>Weapons</b>	0.1%	0.1%	0.1%	<b>0.1%</b>
<b>Mental Health</b>	1.4%	2.3%	4.0%	<b>4.0%</b>
<b>Domestic</b>	0.0%	0.1%	0.0%	<b>0.2%</b>
<b>Prejudice</b>	0.3%	0.3%	0.3%	<b>0.4%</b>

# Anti-Social Behaviour Incidents by Ward

The table below provides data on anti-social behaviour for the period 2016/17 to date. The data in the tables show statistics to date and comparative data for the same time period in previous years.

	2013/14	2014/15	2015/16	2016/17	By Month											
					Apr	May	Jun	Jul	Aug	Sep	Oct	Nov	Dec	Jan	Feb	Mar
					Castle	363	1902	1770	1760	133	160	205	191	189	168	156
Eastfield	144	440	521	570	32	49	44	62	62	68	50	30	28	48	31	66
North Bay	96	513	497	445	26	42	44	48	54	47	41	27	35	22	25	34
Central	84	391	409	370	29	20	50	35	32	23	31	20	35	29	35	31
Filey	75	375	325	367	24	29	37	48	44	31	35	22	21	24	22	30
Whitby West Cliff	63	431	381	356	36	23	24	39	39	28	34	22	22	33	32	24
Ramshill	61	328	296	318	36	24	19	23	33	26	21	19	28	32	22	35
Woodlands	64	332	308	314	33	26	22	39	21	43	33	25	17	16	13	26
Streonshalh	54	254	242	233	17	27	14	17	31	21	20	14	16	26	19	11
Stepney	51	223	210	223	25	16	24	20	14	20	23	15	13	17	12	24
Falsgrave Park	42	210	203	208	11	19	16	23	21	15	18	14	25	22	7	17
Northstead	33	216	212	168	15	17	29	15	23	15	12	12	6	5	6	13
Hertford	18	162	185	152	10	22	13	16	11	12	9	5	13	10	10	21
Newby	29	195	147	148	9	11	12	14	12	6	28	14	10	6	13	13
Seamer	45	119	121	126	5	6	16	22	9	8	10	10	7	10	3	20
Mayfield	19	88	84	119	10	12	5	11	12	13	10	7	9	20	3	7
Weaponness	19	105	110	117	12	13	6	12	12	10	16	4	9	4	6	13
Cayton	13	101	96	89	7	8	8	13	10	9	10	5	4	4	5	6
Scalby, Hackness and Staintondale	20	68	46	79	7	5	7	2	15	9	14	6	1	3	7	3
Derwent Valley	17	84	66	69	3	6	6	7	3	4	8	8	6	8	1	9
Esk Valley	16	62	54	69	3	5	9	11	10	7	4	6	3	4	4	3
Mulgrave	12	63	83	58	6	5	6	11	9	6	2	4	2	2	3	2
Fylingdales	6	32	27	38	3	3	4	2	5		1	6	3	4	5	2
Lindhead	5	44	32	37	4	7	7	4	5	1	2		1	2	1	3
Danby	1	26	18	17			2	2	3	1	2		1	1		5



# Anti-Social Behaviour Incidents by Street

The table below provides data on anti-social behaviour for the period 2016/17 to date. The data in the tables show statistics to date and comparative data for the same time period in previous years.

	2013/14	2014/15	2015/16	2016/17	By Month											
					Apr	May	Jun	Jul	Aug	Sep	Oct	Nov	Dec	Jan	Feb	Mar
					WESTBOROUGH	171	179	158	204	14	15	21	25	25	17	17
HUNTRISS ROW	64	104	87	94	21	10	13	5	6	6	7	2	6	5	9	4
CASTLE ROAD	97	83	96	103	4	12	16	7	10	9	9	5	5	11	6	9
FALSGRAVE ROAD	110	90	84	85	14	7	11	9	3	9	10	6	5	4	3	4
HIGH STREET	160	72	86	175	1	8	21	12	29	14	17	7	13	17	18	18
NORTH MARINE ROAD	74	96	110	86	7	11	10	9	8	4	5	5	4	4	9	10
FORESHORE ROAD	63	70	70	73	4	8	12	11	9	7	5	2	2	4	4	5
CROMWELL TERRACE	12	10	23	32	16	1	3			2	1	1	1	2	2	3
MANHAM HILL	35	42	39	65	4	7	7	7	5	6	2	1	2	9	2	13
ALMA SQUARE	14	12	59	54	2	8	7	12	2	7	3	4	1	2	3	3
CROSS STREET	32	41	83	47	4	2	10	9	7	4	3	2		2	2	2
NEWBOROUGH	56	60	37	56	4	7	6	5	4	4	6	3	4	1	2	10
PEASHOLM DRIVE	48	26	43	29	3	7	7	2	4	1	1	1			2	1
BARROWCLIFF ROAD	18	41	39	35	6	8	1	3	2	4		2	3		2	4
STONEGATE	30	34	25	22	5	9	2	1		1				1	1	2
CLARK STREET	7	6	23	50	1	10	2	6	6	7	4	2	8	3		1
DEAN ROAD	69	65	55	51	9		4	1	3	8	11	3	3	2	4	3
WOODLANDS DRIVE	71	62	43	48	5	2	6	9	3	3	3	2	4	4	3	4
ABERDEEN WALK	29	31	32	33	6	3	3	2	3	4	3	1	2	1	3	2
ALBEMARLE CRESCENT	58	40	24	29	4	6	2	2		5	4	1	1	2	2	
HOXTON ROAD	18	23	31	29	3	2	7	2	1		6	1	1	2	4	
LONGWESTGATE	12	19	36	25	1	4	7	2		1	2	2	1	2		3
QUEEN STREET	58	66	68	81	6	2	3	12	15	9	13	3	3	6	3	6
ST. THOMAS STREET	103	56	51	37	4	2	6	2	2	5	7	2		2	4	1
STATION AVENUE	54	40	55	50	4	4	4	3	7	7	7	3	4	1	6	
LANGBORNE ROAD	60	28	32	27	2	8		2		2	2	2	2	3	2	2
STATION ROAD	39	26	35	40	4	6	1	5	5	3	3	3	2	3	2	3
WEST SQUARE	9	23	12	36	2	5	4	4	8	6	3	2	1	1		
WESTWAY	23	26	33	38	3	6	2	4	5	2	3	2	1	2	4	4
WOOLER STREET	35	60	55	35	2	3	5	3	2	2	2	1		9	4	2

# ASB Detailed Analysis

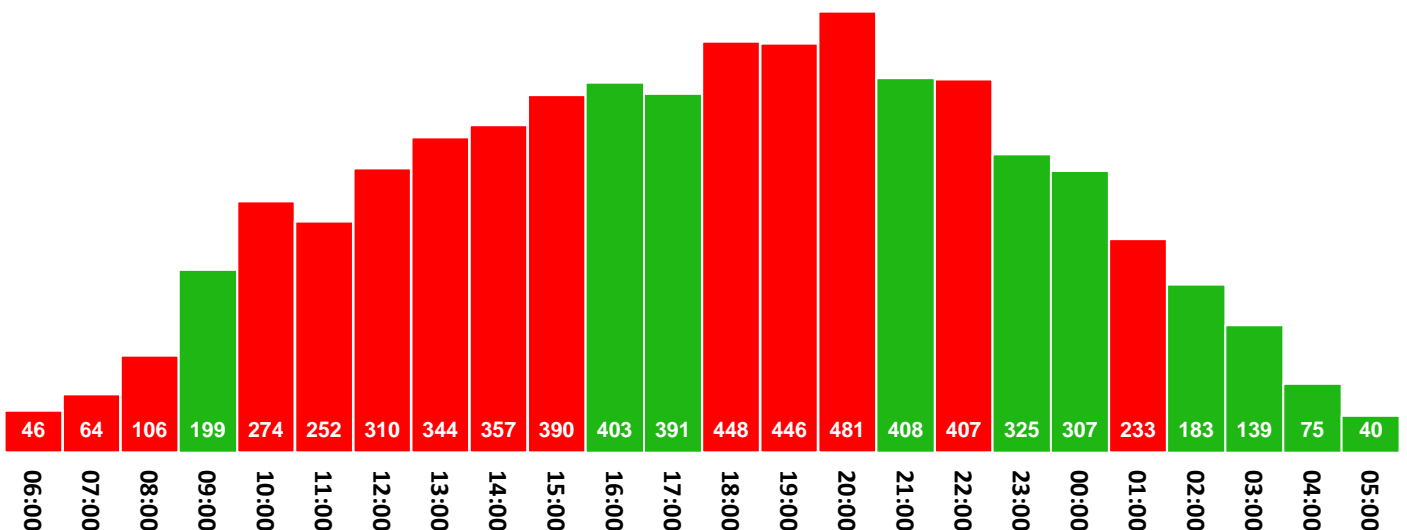
The table below provides more detailed analysis on domestic incidents for the period 2016/17 to date. The data in the tables show statistics to date and comparative data for the same time period in previous years.

## ASB Incidents Detailed Analysis

% Incidents	2014/15	2015/16	2016/17	By Month											
				Apr	May	Jun	Jul	Aug	Sep	Oct	Nov	Dec	Jan	Feb	Mar
Monday	13%	13%	13%	62	78	98	87	110	75	81	48	46	82	63	60
Tuesday	13%	13%	13%	54	91	88	65	125	78	64	66	49	67	59	61
Wednesday	12%	13%	13%	61	58	90	93	114	79	71	58	53	65	52	83
Thursday	14%	14%	13%	73	73	103	90	71	88	70	33	66	47	52	101
Friday	15%	16%	16%	93	86	80	121	90	117	101	72	65	69	58	92
Saturday	18%	17%	17%	103	72	102	142	119	89	121	70	94	47	62	88
Sunday	16%	15%	15%	61	119	80	115	76	86	98	59	52	63	64	101
<b>Total Incidents</b>	<b>6901</b>	<b>6587</b>	<b>6628</b>	<b>507</b>	<b>577</b>	<b>641</b>	<b>713</b>	<b>705</b>	<b>612</b>	<b>606</b>	<b>406</b>	<b>425</b>	<b>440</b>	<b>410</b>	<b>586</b>

## ASB Incidents Detailed Analysis

% Incidents	2014/15	2015/16	2016/17	By Month											
				Apr	May	Jun	Jul	Aug	Sep	Oct	Nov	Dec	Jan	Feb	Mar
Day (6am - 6pm)	45%	47%	47%	238	273	312	312	296	288	272	202	224	227	208	284
Night (6pm - 6am)	55%	53%	53%	269	304	329	401	409	324	334	204	201	213	202	302
<b>Total Incidents</b>	<b>6901</b>	<b>6587</b>	<b>6628</b>	<b>507</b>	<b>577</b>	<b>641</b>	<b>713</b>	<b>705</b>	<b>612</b>	<b>606</b>	<b>406</b>	<b>425</b>	<b>440</b>	<b>410</b>	<b>586</b>



# Domestic Incidents Summary

The table below provides data on domestic incidents for the period 2016/17 to date. The data in the tables show statistics to date and comparative data for the same time period in previous years. The report provides data on domestic incidents that are classified by meeting on or more of the following criteria:

- a) Incident closing code is "PSW Domestic Incident"
- b) Incident with a Domestic 174 or 253 form attached
- c) Where the victim/offender relationship is classified as 'family' or 'spouse/partner'
- d) The incident is classified as 'domestic' in the Hate Crime description
- e) The NICL closure code on the incident is "Domestic Abuse"

An incident is classified as a "repeat incident" when the victim is a victim within the previous 12 months.

## Domestic Incidents Summary

Overall, the level of domestic incidents has decreased by -6.4% (-166 offences).

During the latest month, the level of domestic incidents has decreased this month by -93.6% (-189 offences).

Total Incidents	Apr	May	Jun	Jul	Aug	Sep	Oct	Nov	Dec	Jan	Feb	Mar	
2013/14	0	0	0	0	0	0	0	0	0	0	0	0	0
2014/15	191	223	210	204	218	198	247	226	210	176	181	204	2488
2015/16	233	185	225	245	254	241	195	209	212	180	193	202	2574
2016/17	197	213	202	247	264	217	210	202	193	230	220	13	2408
	-15%	15%	-10%	1%	4%	-10%	8%	-3%	-9%	28%	14%	-94%	-6%

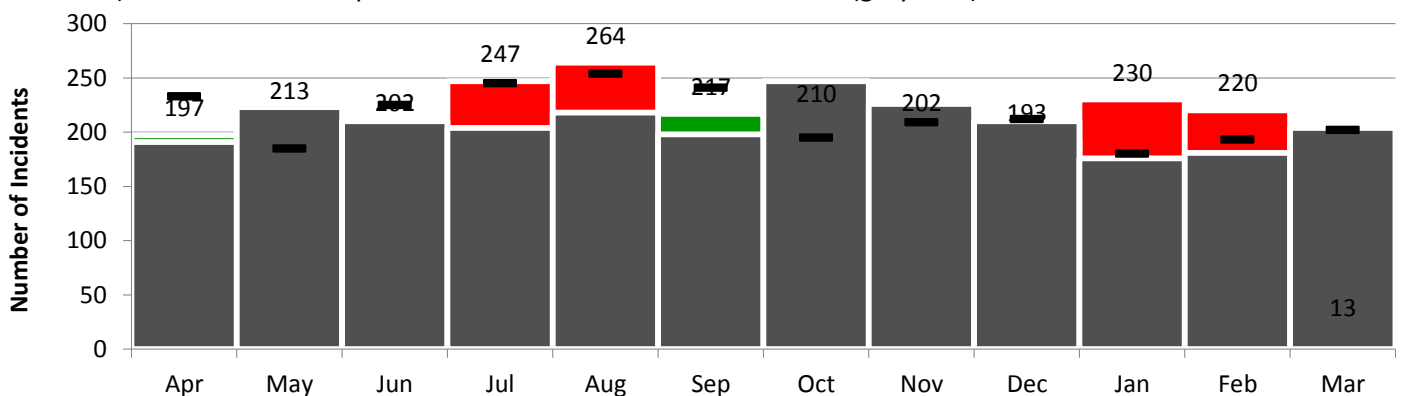
## Repeat Incidents

Overall, the level of repeat domestic incidents is 39.7%.

During the latest month, the level of repeat domestic incidents is 61.5%.

Repeat Incidents	Apr	May	Jun	Jul	Aug	Sep	Oct	Nov	Dec	Jan	Feb	Mar	
2014/15	100%	100%	100%	100%	100%	100%	100%	100%	100%	100%	100%	100%	100%
2015/16	100%	100%	100%	100%	100%	26%	20%	22%	31%	26%	29%	32%	59%
2016/17	36%	34%	35%	38%	34%	43%	46%	48%	38%	40%	44%	62%	40%

The graph below shows the number of incidents each month for 2015-16 (red / green bars), and for the previous year (black lines). The number of repeat incidents for 2014-15 is also shown (grey bars).



# Domestic Incidents Detailed Analysis

The table below provides more detailed analysis on domestic incidents for the period 2016/17 to date. The data in the tables show statistics to date and comparative data for the same time period in previous years.

## Domestic Incidents Detailed Analysis

% Incidents	2014/15	2015/16	2016/17	By Month											
				Apr	May	Jun	Jul	Aug	Sep	Oct	Nov	Dec	Jan	Feb	Mar
Involving Arrest	25%	27%	30%	61	57	73	85	87	61	59	62	61	57	58	2
Crimed	37%	47%	48%	93	101	120	123	123	95	88	88	88	110	111	6
Children Present	22%	24%	25%	58	42	55	58	73	55	48	46	52	61	48	2
Total Incidents	2488	2574	2408	197	213	202	247	264	217	210	202	193	230	220	13

# Domestic Incidents Detailed Analysis

The table below provides more detailed analysis on domestic incidents for the period 2016/17 to date. The data in the tables show statistics to date and comparative data for the same time period in previous years.

## Domestic Incidents Temporal Analysis

% Incidents	2014/15	2015/16	2016/17	By Month											
				Apr	May	Jun	Jul	Aug	Sep	Oct	Nov	Dec	Jan	Feb	Mar
Monday	13%	14%	13%	31	22	23	31	43	23	31	33	31	26	22	
Tuesday	15%	13%	14%	25	35	33	36	33	26	27	27	22	51	24	
Wednesday	13%	14%	13%	23	23	32	21	47	27	25	27	28	29	21	3
Thursday	13%	14%	14%	19	30	33	36	31	25	26	26	31	34	34	2
Friday	14%	13%	14%	37	20	22	38	30	52	21	27	37	25	32	8
Saturday	16%	15%	16%	37	33	31	37	47	31	33	26	24	29	46	
Sunday	16%	17%	16%	25	50	28	48	33	33	47	36	20	36	41	
<b>Total Incidents</b>	<b>2488</b>	<b>2574</b>	<b>2408</b>	<b>197</b>	<b>213</b>	<b>202</b>	<b>247</b>	<b>264</b>	<b>217</b>	<b>210</b>	<b>202</b>	<b>193</b>	<b>230</b>	<b>220</b>	<b>13</b>

% Incidents	2014/15	2015/16	2016/17	By Month											
				Apr	May	Jun	Jul	Aug	Sep	Oct	Nov	Dec	Jan	Feb	Mar
Day (6am - 6pm)	53%	53%	53%	106	113	114	149	145	120	104	105	104	99	115	2
Night (6pm - 6am)	47%	47%	47%	91	100	88	98	119	97	106	97	89	131	105	11
<b>Total Incidents</b>	<b>2488</b>	<b>2574</b>	<b>2408</b>	<b>197</b>	<b>213</b>	<b>202</b>	<b>247</b>	<b>264</b>	<b>217</b>	<b>210</b>	<b>202</b>	<b>193</b>	<b>230</b>	<b>220</b>	<b>13</b>

# Domestic Incidents by Ward

The table below provides data on domestic incidents for the period 2015/16 to date. The data in the tables show statistics to date and comparative data for the same time period in previous years.

	2013/14	2014/15	2015/16	2016/17	By Month											
					Apr	May	Jun	Jul	Aug	Sep	Oct	Nov	Dec	Jan	Feb	Mar
Castle		366	345	383	27	30	46	48	44	33	33	31	26	35	27	3
Eastfield		271	287	250	11	17	16	31	27	31	23	18	17	27	27	5
Central		177	242	225	14	20	23	28	23	17	20	18	19	20	23	
North Bay		183	178	209	15	21	14	18	26	25	19	16	17	16	20	2
Woodlands		238	218	143	8	15	12	12	11	13	15	12	15	15	15	
Ramshill		158	167	135	16	15	5	14	10	15	16	13	8	12	11	
Whitby West Cliff		109	123	112	7	11	10	13	10	6	6	8	10	14	17	
Falsgrave Park		125	100	109	8	9	9	11	4	9	14	13	12	9	10	1
Filey		118	131	101	12	12	6	13	13	5	7	6	11	7	9	
Streonshalh		105	101	92	12	5	9	10	14	6	8	12	8	3	5	
Northstead		88	96	89	13	10	8	7	8	9	6	8	4	7	9	
Hertford		60	68	83	3	9	9	2	18	10	6	4	6	10	6	
Stepney		95	87	82	10	6	4	7	8	9	2	5	10	8	13	
Cayton		88	97	78	15	10	9	4	8	3	10	1	2	7	8	1
Newby		65	78	52	4	2	4	6	10	7	4	4	4	7		
Mayfield		37	53	47	3	4	3	4	8	3	3	6	8	3	2	
Mulgrave		31	22	40	3	4	4	2	3	2	3	3	3	9	4	
Seamer		29	38	38	4	5	4	5	3	4	3	2	4	2	2	
Weaponness		27	33	28	3	1	2	1	5	1	4	5	4	2		
Derwent Valley		28	22	24	1		2	3	2	1	1	4	1	4	5	
Fylingdales		14	16	23	2	1		1	2	1	2	3	2	5	3	1
Esk Valley		15	21	20	3	2		2	1	2	3	2		2	3	
Scalby, Hackness and Staintondale		26	27	18	2		2	1	2	3	2	1		5		
Lindhead		13	14	13	1	2	1	1	3			3	1		1	
Danby		9	4	6				2				2	1	1		